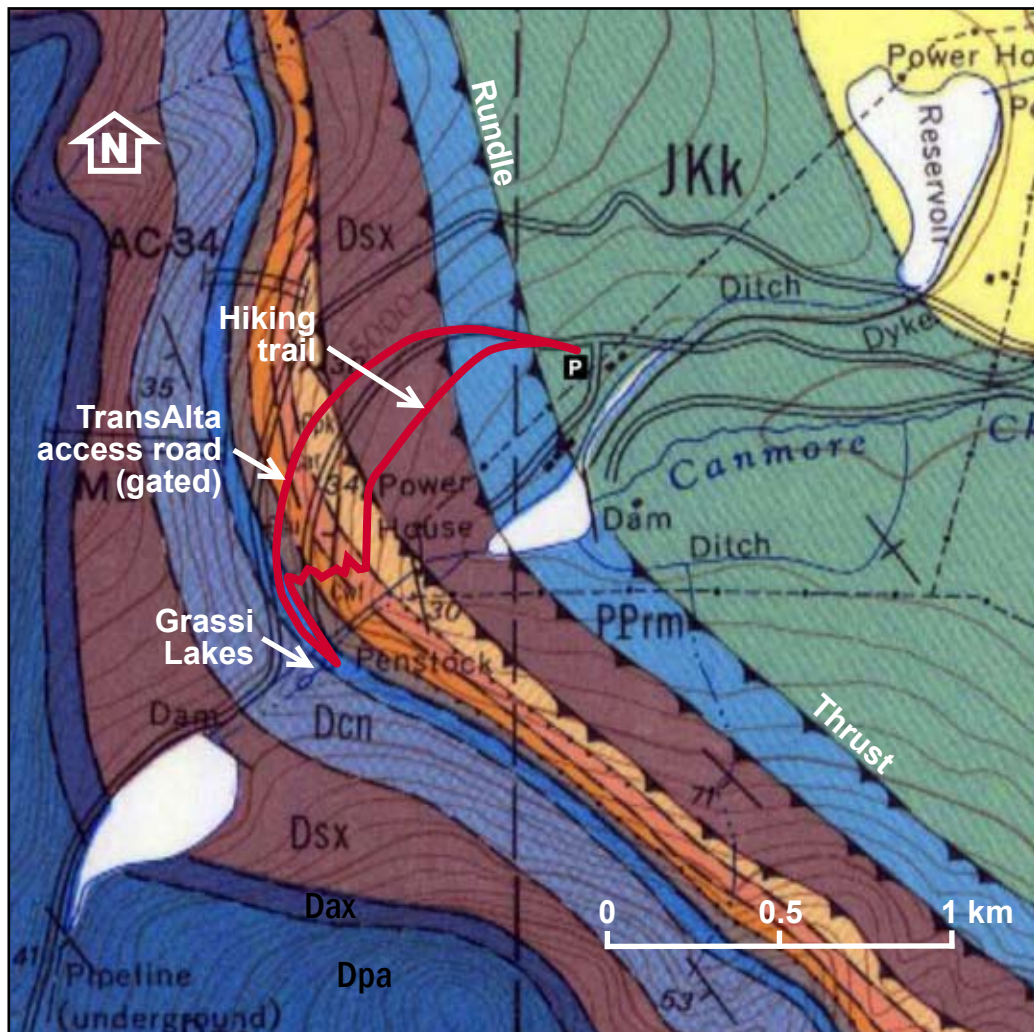


Geology of the Grassi Lakes area

Enlarged from Geological Survey of Canada map 1266A, 82O/3 West, *Canmore (West Half)*
by R.A. Price 1970



Trails and other annotation by Ben Gadd 2013

Rock units

- Jkk** **Kootenay Group:** Jurassic siltstone, mudstone, coal (the coal mined at Canmore), covered and unseen.
- PPrm** **Rocky Mountain Group:** Pennsylvanian and Permian dolostone and chert, covered and unseen.
- Dpa** **Palliser Formation:** Upper Devonian dark-gray massive limestone, weathering into the big light-gray cliffs seen in the mountains above the lakes.
- Dax** **Alexo Formation:** Upper Devonian silty dolostone capping the reef.
- Dsx** **Southesk Formation:** Upper Devonian light-gray dolostone of the upper reef.
- Dcn** **Cairn Formation:** Upper Devonian dark-gray dolostone of the lower Fairholme Carbonate Complex reef, with many stromatoporoids. Forms much of the cliff beside Grassi Lakes.
- Clx** **Lynx Group:** Upper Cambrian interbedded limestone and dolostone seen just below the lakes.
- Çsu** **Sullivan Formation:** Upper Cambrian gray-green shale, recessive and unseen.
- Çwf** **Waterfowl Formation:** Middle Cambrian orange-weathering wavy-bedded dolostone, prominent along the section of trail with the stairs.
- Çar** **Arctomys Formation:** Middle Cambrian red and green shale, recessive and mostly unseen.
- Çpk** **Pika Formation:** Middle Cambrian thin-bedded gray dolostone, seen at the trail viewpoint.